

Nadeau / Paquin / Laporte dit St. George Ancestral Lines to France

by Conrad W. Terrill, Sept. 2008

Maxim Nadow's Paternal Line

Maxim Nadow (b. ~1845, Swanton, VT)

m. 18 Aug. 1866, Douglas, MA,

M. Henriette Paquin (b. 14 Oct. 1846, St-Charles-des-Grondines, Québec,
dau. of Eustache Paquin & M. Louise Sauvageau).^{MR1,DC}

Benjamin Nadow (b. **Jean Baptiste Cyprien Nadeau**, 1823, Verchères, Québec)^{DC}

m. ~1845 (and again 25 Apr. 1852, Swanton, VT, a “réhabilitation marriage”),

M. Odile Laporte dite St. George (b. 27 Mar. 1829, St-Pierre-de-Sorel, Québec,
dau. of Joseph Marie Laporte dit St. George & M. Marguerite Arpin dite Poitvin).^{DC}

Jean Baptiste Nadeau (b. 1787, Basilique Notre-Dame-de-Montréal, Québec)

m. 21 Feb. 1814, Verchères, Quebec,

M. Louise Beaupré (b. 1795, Verchères, Québec, dau. of Charles Beaupré &
M. Magdeleine Banlier dite Lapalme?).^{DC}

Joseph Nadeau

m. 18 Nov. 1777, Basilique Notre-Dame-de-Montréal, Québec,

M. Joseph Rouillard-Gauvin (b. ~1757, daughter of Pierre Rouillard-Gauvin &
M. Joseph Truchon).^{RD,DC} {Note: The RD year for this marriage (1797) is incorrect.}

Jean Baptiste Nadeau

m. 14 Nov. 1746, St-Pierre-du-Sud, Montmagny, Québec,

M. Marthe Fournier (daughter of Simon Fournier & Marthe Bouchard).^{RD,FG}

Jean Baptiste Nadeau

m. 25 Nov. 1721, Berthier-en-Bas, Québec,

Marguerite Carbonneau, (b. ~1702, dau. of Prisque Carbonneau & Marguerite Landry).^{RD,FG}

Jean Baptiste Nadeau (b. ~1668, La Gué-de-Velluire, Vendée, France)

m. 30 Oct. 1696, at St-Jean, Île d'Orléans, Montmorency, Québec,

Marie Anne Dumont (b. ~1672, dau. of Julien Dumont & Catherine Topsan,
d. 12 Jan. 1756, bur. 13 Jan., Berthier-en-Bas).^{RD,FG}

Jean Nadeau (of Le Gué-de-Velluire, France)

m. before 1668,

Marie Raffel.^{RD,FG}

{Note: We're still verifying our identification of Benjamin Nadow as Jean Baptiste Cyprien Nadeau—thus the change in color.}

Hattie Paquin's Paternal Line

Harriet Paquin (b. **M. Henriette Paquin**, 14 Oct. 1846, St-Charles-des-Grondines, Québec)
m. 18 Aug. 1866, Douglas, MA,
Maxim Nadow (b. ~1845, Swanton, VT (see above)).

J. Eustache Paquin (b. 24 Mar. 1804, St-Charles-des-Grondines)
m. 15 Jan. 1833, St-Charles-des-Grondines,
M. Louise Sauvageau (b. 10 Apr. 1812, St-Joseph-de-Deschambault, Quebec,
dau. of Joseph Sauvageau Jr. & Nathalie Garriépy).^{DC}

Joseph Paquin
m. 2? Feb. 1802, St-Charles-des-Grondines,
Marie Joseph Arcan (dau. of Jean Baptiste Arcan & Marie Joseph Martin)^{DC}

Pierre Paquin
m. 21 Jan. 1771, St-Joseph-de-Deschambault
Marie Joseph Sauvageau (dau. of Louis Sauvageau & Ursule Naud).^{RD,DC}

Paul Paquin
m. 6 May 1737, St-Joseph-de-Deschambault,
M. Joseph Arcan (daughter of Pierre Arcan & Véronique Cochon-Laverdière).^{RD,DC}

Nicolas Paquin (of St-Famille de Île de St. Laurent (= Île d'Orléans, I think))
m. 10 Oct. 1705, Contrat Notaire Chambalon (marriage contract drawn up by notary Louis Chambalon),
M. Anne Perrot-Lagorce (daughter of Paul Perrot-Lagorce and Marie Chrétien, of the parish and
seigneurie of Deschambault).^{RD,DC}

Nicolas Paquin
m. 16 Nov. 1676, Château-Richer, France
M. Françoise Plante (daughter of Jean Plante and Françoise Boucher).RD

Jean Paquin (master carpenter of la Poterie-Cap-D'Antifer, in the Archdiocese of Rouen, Normandie)
m. before 16 Nov. 1676,
Renée Fremont.RD

Josephine St. George's Paternal Line

Josephine St. George (b. **M. Odile Laporte dite St. George**, 27 Mar. 1829, St-Pierre-de-Sorel, Québec)
m. ~1845 (and again 25 Apr. 1852, Swanton, VT, a "réhabilitation marriage"),
Benjamin Nadow (b. ~1823, Canada (see above)).^{DC}

Joseph Marie Laporte dit St. George (b. 31 Dec. 1777, St-Pierre-de-Sorel,
m. 14 Apr. 1823, St-Ours, Québec,
M. Marguerite Arpin dite Poitvin (b. 1 Apr. 1795, Contrecoeur Ste-Trinité,
dau. of René Arpin dit Poitvin & Marie Belette).^{RW1,DC}

François Laporte (b. 19 Nov. 1727, Contrecoeur, Québec)
m2. 9 Jan. 1777, St-Antoine-sur-Richelieu.
Joseph Houle.^{RW1,DC}

François Laporte
m. 21 Jun. 1721, Bécancour, Québec,
M. Louise Chefdevergne (b. ?? ___ 1695, dau. of Louis Chefdevergne & Françoise Dupont),^{RD,RW1,DC}

Jacques Laporte (b. 26 Oct. 1665, Montréal)
m. 9 Jan. 1687, Contrecoeur
Madeleine Paviot (b. 1671, Contrecoeur, dau. of Jacques Paviot & Anne Michel).^{RD,RW1}

Jacques de Laporte (b. 1627, Nocé, Perche, France; d. 26 Jan. 1702, Contrecoeur, Québec).^{RD,RW1}
m. 3 Sep. 1657, Montréal,
Nicole Duchesne (b. ~1636, Villevaudé, Seine et Marne, France).^{RD,RW1}

Jacques de Laporte, b. 1596, Nocé, Perche, France;
m. 6 Jun. 1626, Nocé, Perche, France,
Marie Hamelin (b. in Villevaudé, Seine et Marne).^{RD,RW1}

*For more information concerning Jacques de Laporte dit St-Georges, see;
(<http://www.genealogie.org/famille/laporte/en/lineage1.html>).*

From Wikipedia, on "Perche": In the 17th century, a large number of immigrants to New France came from Perche. Many were recruited in the 1630s and 1650s to work for the Church missionaries and the nobles who were establishing estates on the St. Lawrence River. While the total number of emigrants were few, Perche had a much higher rate of emigration to New France than most other regions of France. Nearly all French Canadians have some ancestors who came from the villages of Perche.

References

MR1 = Marriage record, Michael Nedow & Harriet Paquin, 18 Aug. 1866, Douglas, MA; Marriage Reg. vol. 191, p. 200; Massachusetts Archives, Boston, MA (on microfilm, transcribed by CWT, 1998).

DC = The Drouin Collection, Quebec—a vast collection of Quebec church parish registers microfilmed by the *Institut Généalogique Drouin* in the 1940's, and through to the 1960's, now available on-line via Ancestry.com.

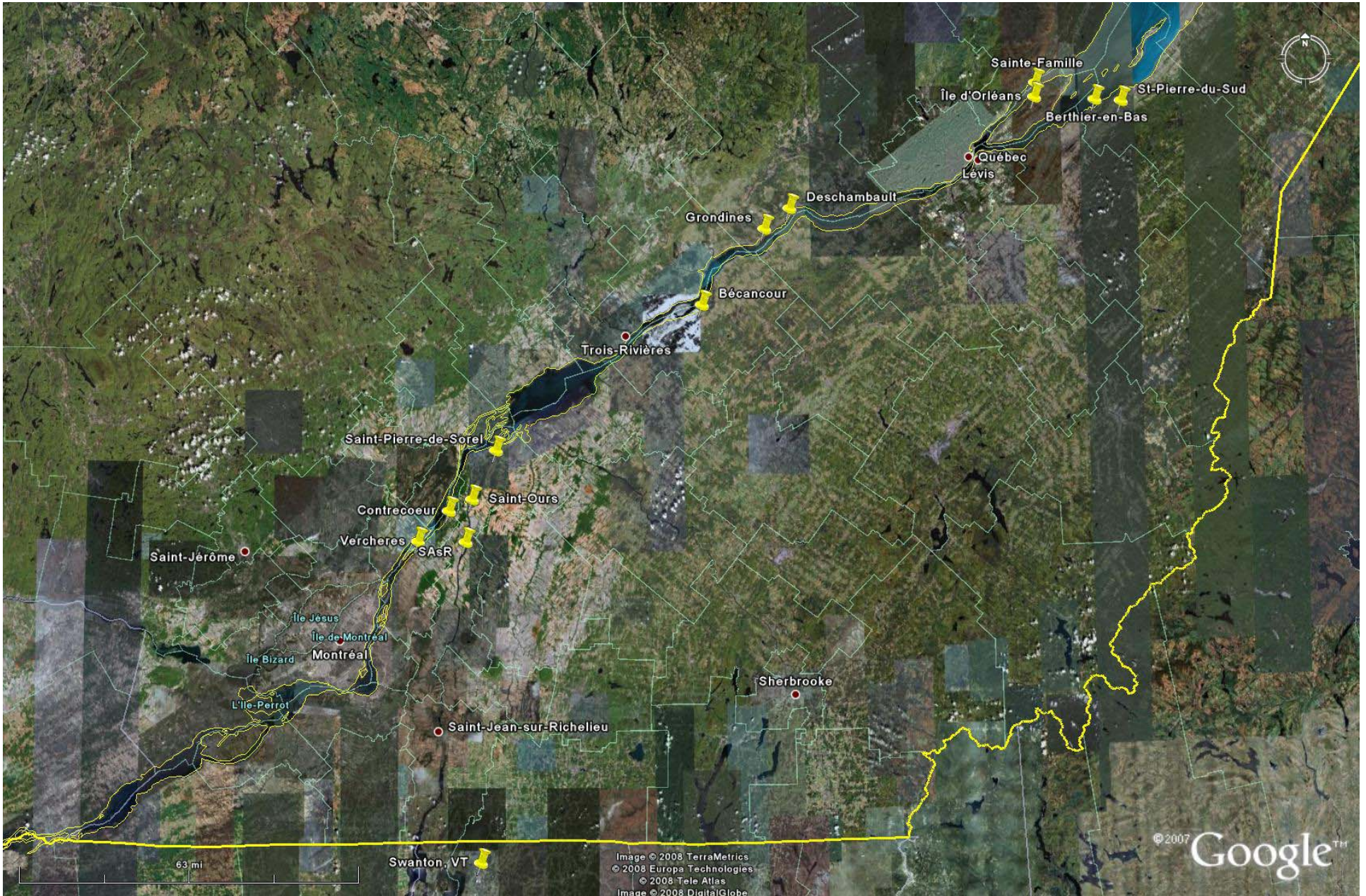
RD = “The red Drouin books,” the Dictionnaire National des Canadiens Français (1608-1760), an index of marriages from the Drouin Collection, Quebec, compiled by the *Institut Généalogique Drouin* under the direction of Gabriel Drouin and published in the late 1950's.

FG = Website: Genealogy of French in North America, Denis Beauregard (<http://www.francogene.com/genealogie-quebec-genealogy/007/007204.php>).

RW1 = RootsWeb WorldConnect Project 28534, ID:I302, Joseph Jean-Baptiste Laporte, as of 25 Aug. 2001 (<http://wc.rootsweb.ancestry.com/cgi-bin/igm.cgi?op=GET&db=:a28534&id=I302>). Note: I believe that the “Jean-Baptiste” part of his name here is a mistake. His name was Joseph Marie Laporte dit St. George.

Places in Canada mentioned in the ancestral lines

(SAsR is St-Antoine-sur-Richelieu)



Places in France mentioned in the ancestral lines

